

**Colour chart**

---

DécorS -  
TRENDcollection

# TRENDcollection

MFC, HPL

The colours of the TRENDcollection are available in a limited number of versions and particularly suitable for vertical application. The TRENDcollection can be subject to alterations.

For more colours see décors COREcollection.



fenix black 720 \*\*



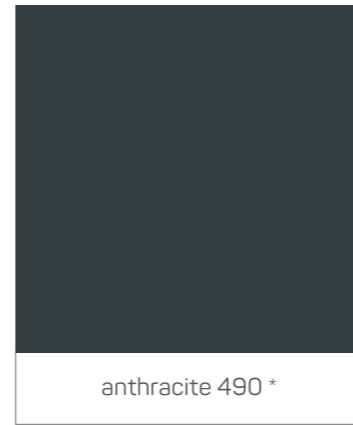
nude apricot 232 \*



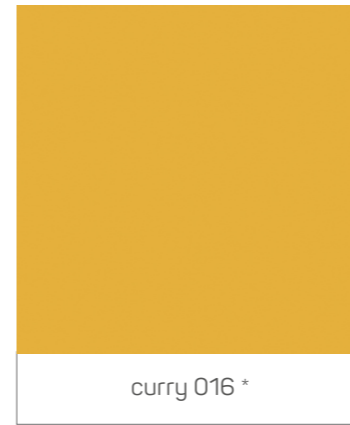
ocean blue 185 \*



italian oak 86



anthracite 490 \*



curry 016 \*



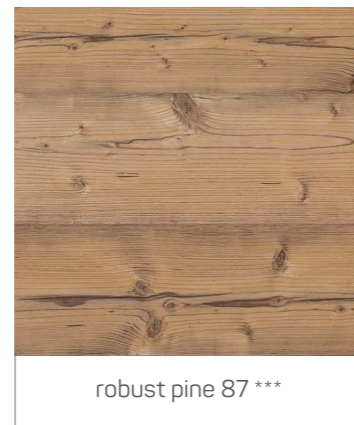
mint 190 \*



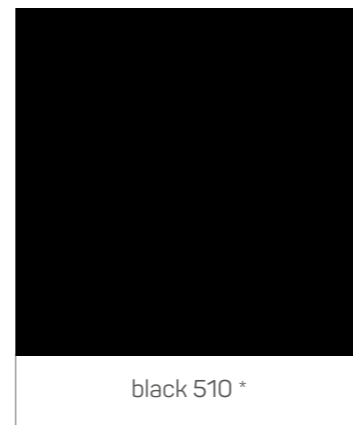
taupe 195 \*



dark oak 34



robust pine 87 \*\*\*



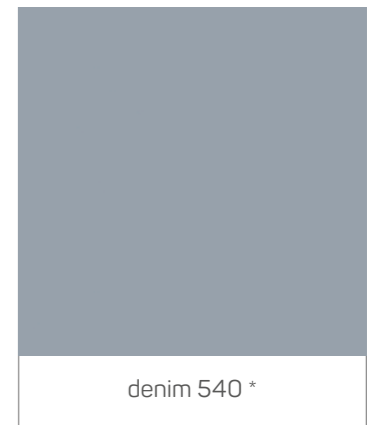
black 510 \*



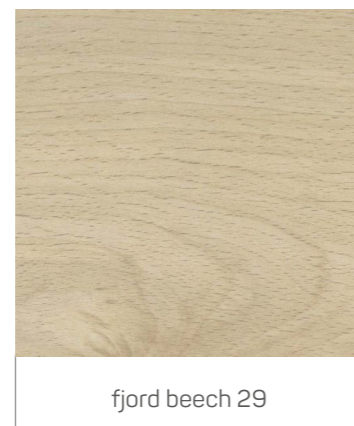
salsa 166 \*



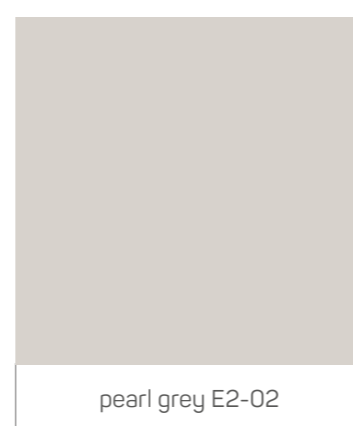
avocado 503 \*



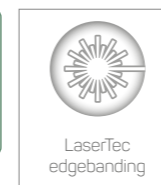
denim 540 \*



fjord beech 29



pearl grey E2-02



° MFC and HPL tops available as responsible, certified PEFC or FSC® wood.

△ See price lists and product sheets for all options regarding top thickness. Top edges are finished with 2 mm LaserTec edgebanding. Mutual colour combinations at surcharge.

colour	MFC		HPL <sup>△</sup>
	certified sustainable wood <sup>°</sup>		certified sustainable wood <sup>°</sup>
	18 mm	36 mm	
dark oak 34	•	•	•
italian oak 86	•	•	•
fjord beech 29	•	•	•
robust pine 87 ***	•	•	•
anthracite 490 *	•	•	•
black 510 *	•	•	•
pearl grey E2-02	•	•	•
fenix black 720 **			•
mint 190 *	•	•	•
taupe 195 *	•	•	•
ocean blue 185 *	•	•	•
curry 016 *	•	•	•
nude apricot 232 *	•	•	•
denim 540 *	•	•	•
avocado 503 *	•	•	•
salsa 166 *	•	•	•

\* Matte structure. Only suitable for vertical application.

\*\* Only in HPL version. See price list for all options. Other versions available upon request.

\*\*\* Coarse structure. Less suitable for writing.

Digital and/or printed rendering of the colours can deviate from the actual colour. Subject to colour changes.

Colours can deviate from the original colour, we therefore advise you to always ask for our free colour samples in advance to prevent any disappointments.

Can't find the colour or print you're looking for? Check out our décor chart COREcollection. Still can't make a choice? At Vepa a lot is possible on request.

All our tops are made from sustainable PEFC (PEFC/30-31-043)- or FSC® (C028807) certified wood. PEFC and FSC® have established standards for forest management linked to a quality label. The final user can rest assured that the wood comes from well-managed forests, because it is followed through the entire production chain. Harvesting in a certified forest is done with great care, preserving the forest for future generations.

Vepa uses the unique laser technology in the processing of edgebanding. The LaserTec technology is used to fuse edgebanding to the desk top with a laser beam. Glue is no longer used. The LaserTec technology has many advantages when it comes to quality, sustainability and design



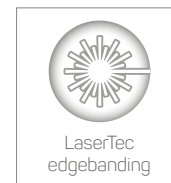
Wood with PEFC certificate is guaranteed from a properly managed forest. The PEFC quality label guarantees that a product comes from forests that are managed in accordance with the PEFC standards. The forest is managed in a verifiable and sustainable way, where nature is protected, the rights and safety of the employees and the indigenous people are respected and the felled wood earns money.

Vepa has the "PEFC Chain of Custody" certificate. This guarantees that measures have been taken within our organisation to ensure and verify that the wood that has been purchased as PEFC certified can be tracked within the organisation and can therefore be sold as PEFC certified wood



The Forest Stewardship Council® (FSC®) is an international organisation committed to global preservation and responsible forest management. FSC® speaks of responsible forest management when the ecological, social and economic aspects of forest management are taken into taking account in a balanced manner.

FSC® has awarded Vepa with the CoC certification. CoC, Chain of Custody means that all companies in the production chain are able to separate the flow of FSC® certified wood products from the other wood products, both administrative and physically, and that a certifier has determined that those companies comply to all the appropriate rules and regulations.



The LaserTec technology has many advantages when it comes to quality, sustainability and design:

#### Quality

no seam:

- no chance for moisture and dirt.
- maximum resistance against moisture, heat and chemicals
- most powerful connection
- improved cleaning

#### Design

- no visible seam
- no contamination in seam; sustainably beautiful
- maximum lightfastness (PP)
- exact colour correspondence top and edge

#### Sustainability

- lasts longer
- PP sustainable synthetic banding
- less use of energy
- no glue required, better for the environment